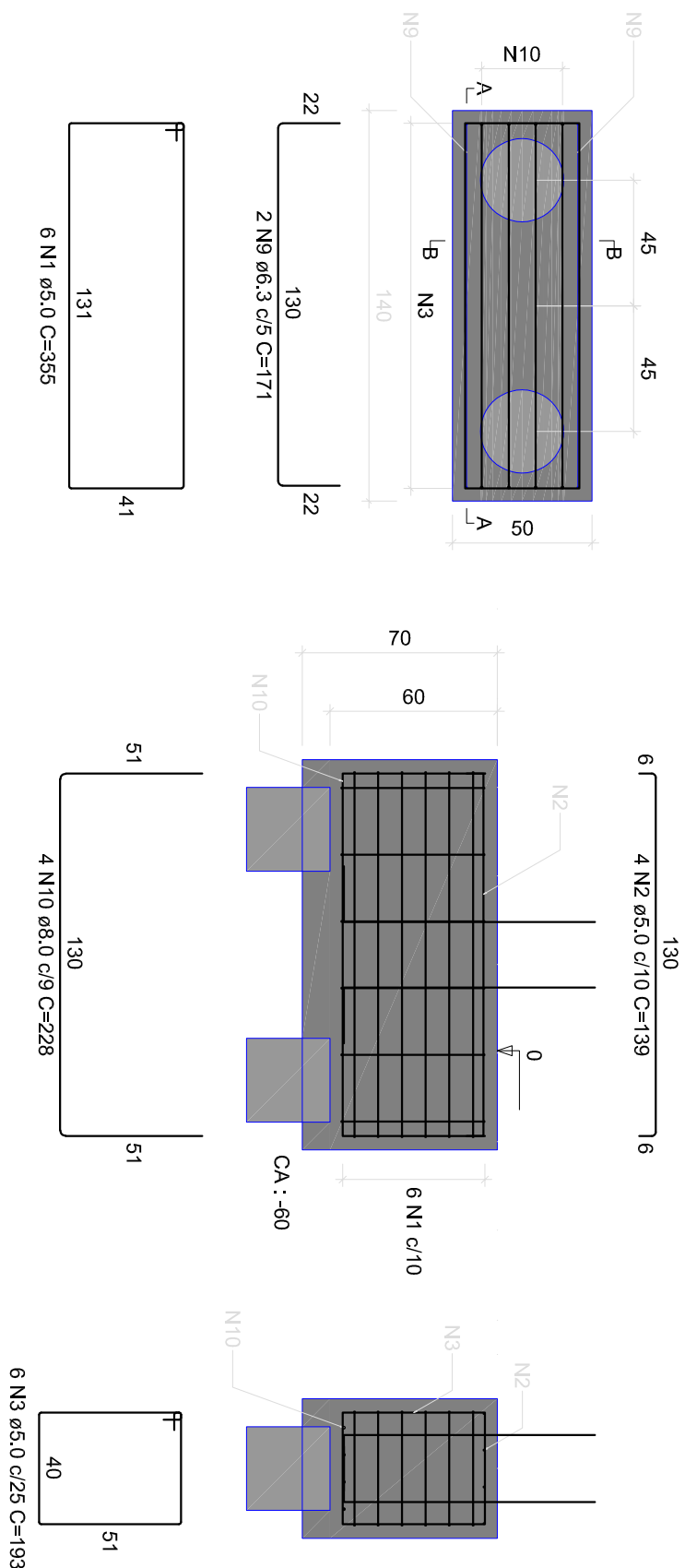


B1=B2=B3=B4=B5=B6=B7=B8=B9=B10=B11=B12  
=B13=B14=B15=B16=B17=B18=B20=B22=B23  
=B24=B25=B26=B27=B28=B29=B30=B32=B33  
=B34=B35=B36=B37=B38=B39=B40=B41=B44

2xR30  
PLANTA  
ESC 1:25

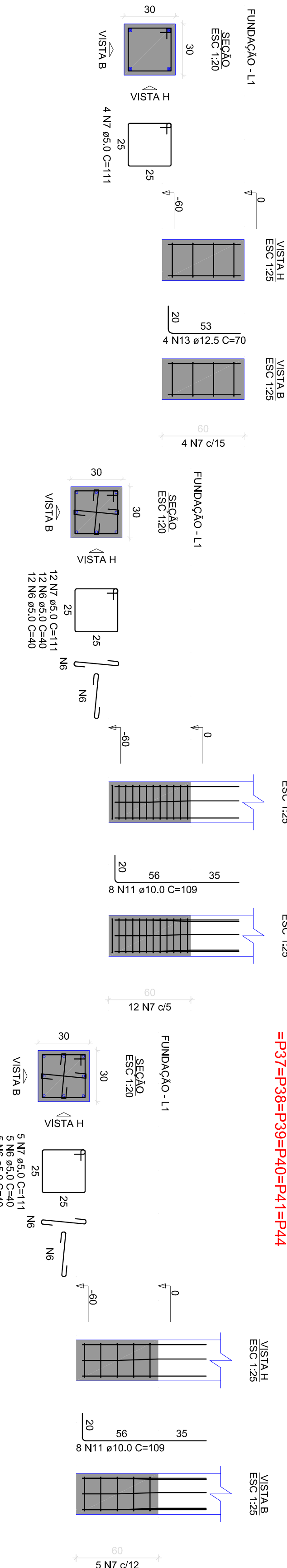
CORTE A-A  
ESC 1:25

CORTE B-B  
ESC 1:25



P20=P22=P23=P24=P25=P26=P27=  
=P28=P29=P30=P32=P33

P1=P2=P3

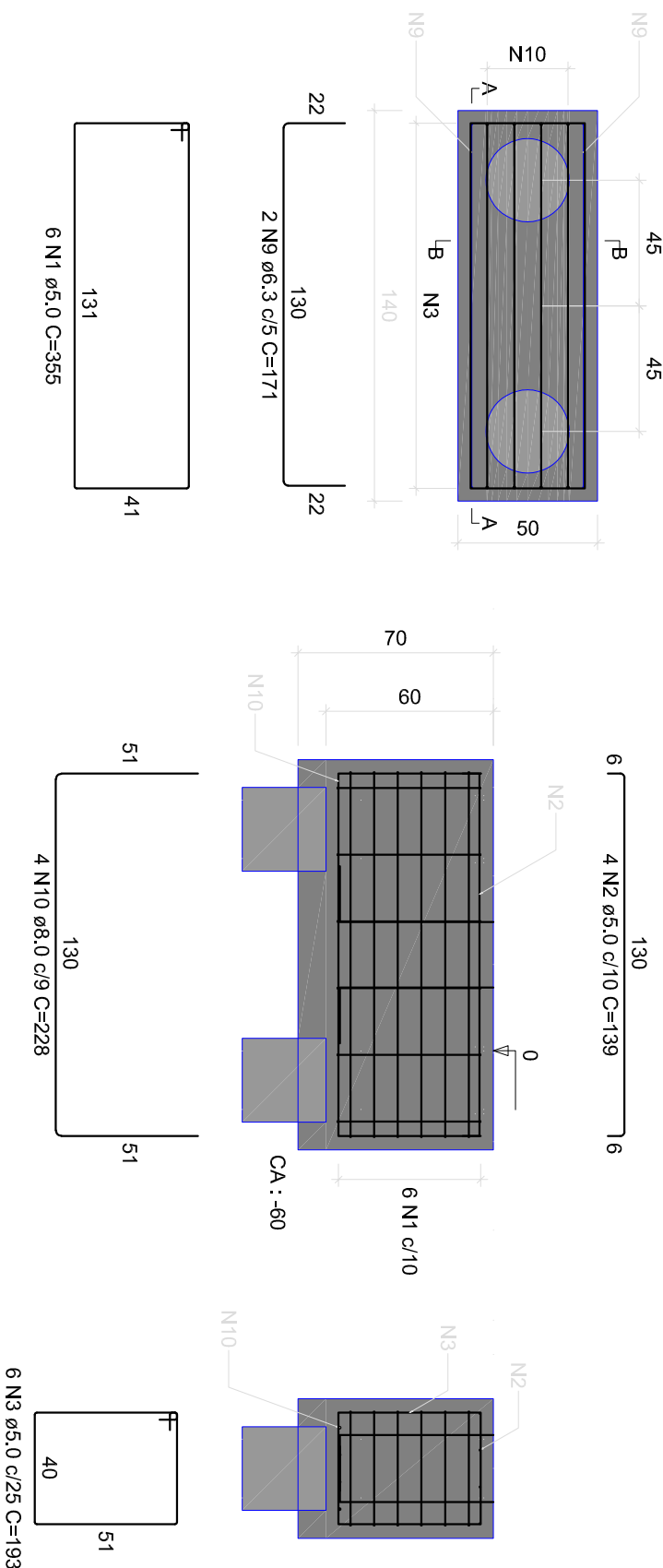


P4=P5=P6=P7=P8=P9=P10=P11=P12=P13=  
=P14=P15=P16=P17=P18=P19=P20=P21=P22=  
=P23=P24=P25=P26=P27=P28=P29=P30=P31=P32=P33=P34=P35=P36=P37=P38=P39=P40=P41=P42

B19=B21=B31  
2xR30  
PLANTA  
ESC 1:25

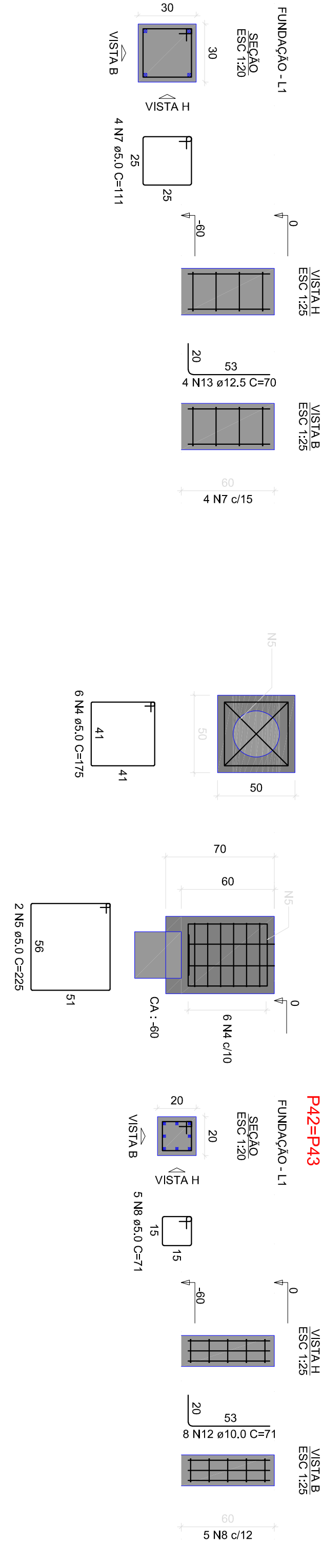
CORTE A-A  
ESC 1:25

CORTE B-B  
ESC 1:25



Atenção: Bloco com estrutura tradicional.  
Prever armaduras das estacas  
atracadas na face superior do bloco.

P19=P21=P31



RESUMO DO AÇO				
ACO	N	DIAM (mm)	QUANT. C/UNIT	C.TOTAL (cm)
CA60	1	5.0	222	335
CA60	3	5.0	183	8940
CA60	4	5.0	12	175
CA60	6	5.0	312	2100
CA60	7	5.0	216	111
CA60	8	5.0	84	171
CA60	10	8.0	168	228
CA60	11	10.0	216	109
CA60	12	12.5	60	70
CA60	13	12.5	60	70

ACO	DIAM (mm)	C.TOTAL (m)	PESO * 10% (kg)
CA60	6.3	143.6	38.7
CA60	8.0	383	186.3
CA60	10.0	2443	1221.5
CA60	12.5	442	44.5
CA60	5.0	2016.1	341.8
PESO TOTAL (kg)			416.8
CA60			341.8

Volume de concreto (C-26) = 20.32 m³  
Área de forma = 114.52 m²

## PROJETO ESTRUTURAL

### RESIDENCIAL

#### PLANTA DE FORMA

#### CONSTRUÇÃO DO TRANSBORDO MUNICIPAL

#### PREFEITURA MUNICIPAL DE ARANJÓ

REV. 0 - 18-05-2022