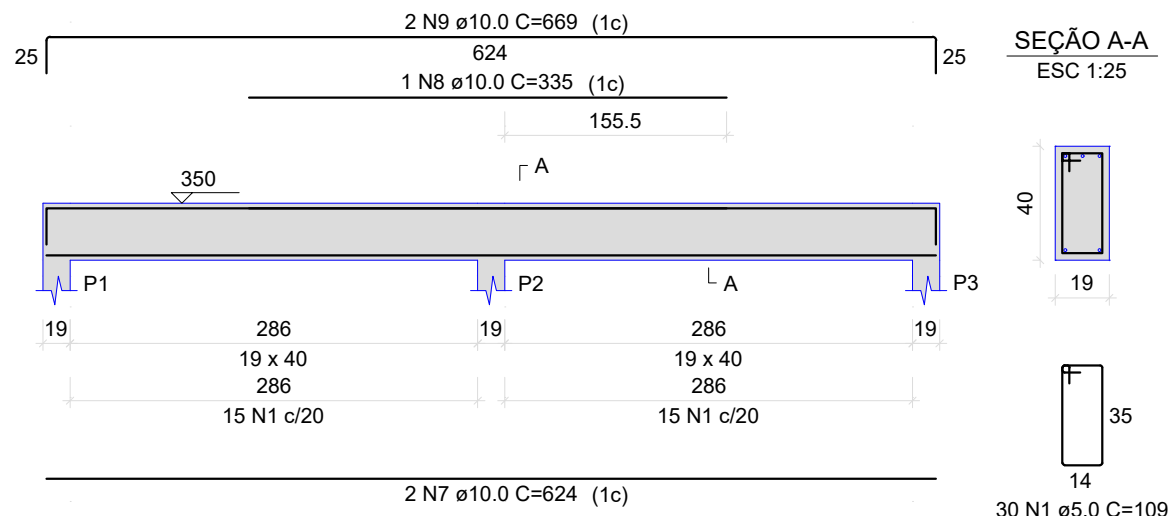


VC - VIGAS DE COERTURA

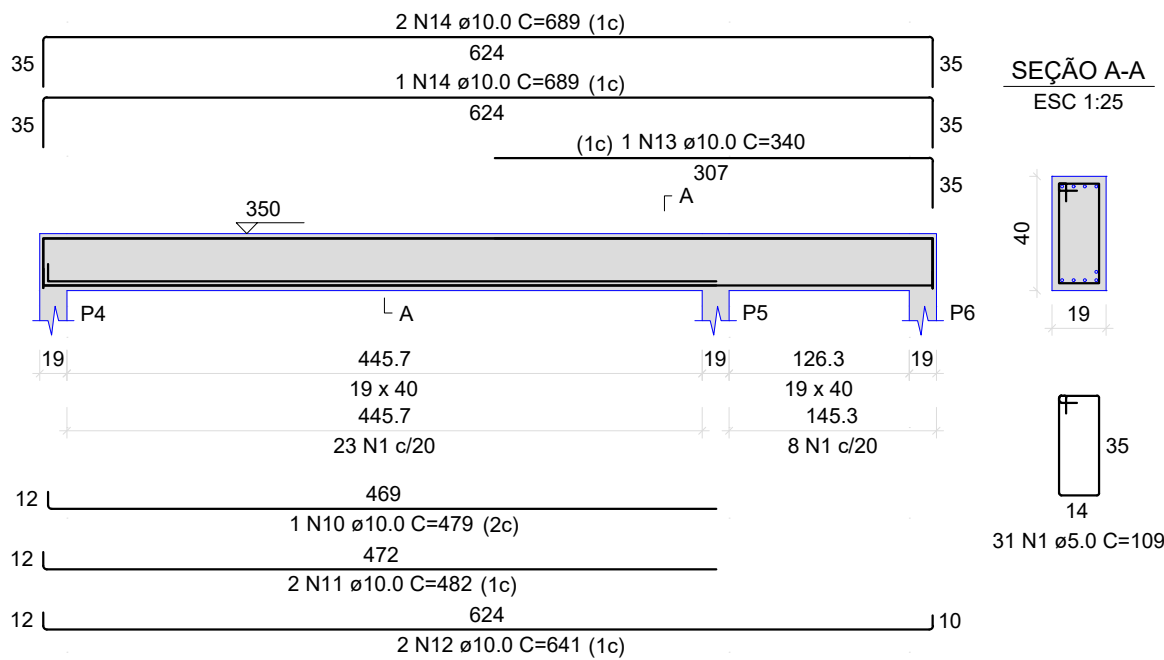
VC201 (19 x 40)

ESC 1:50



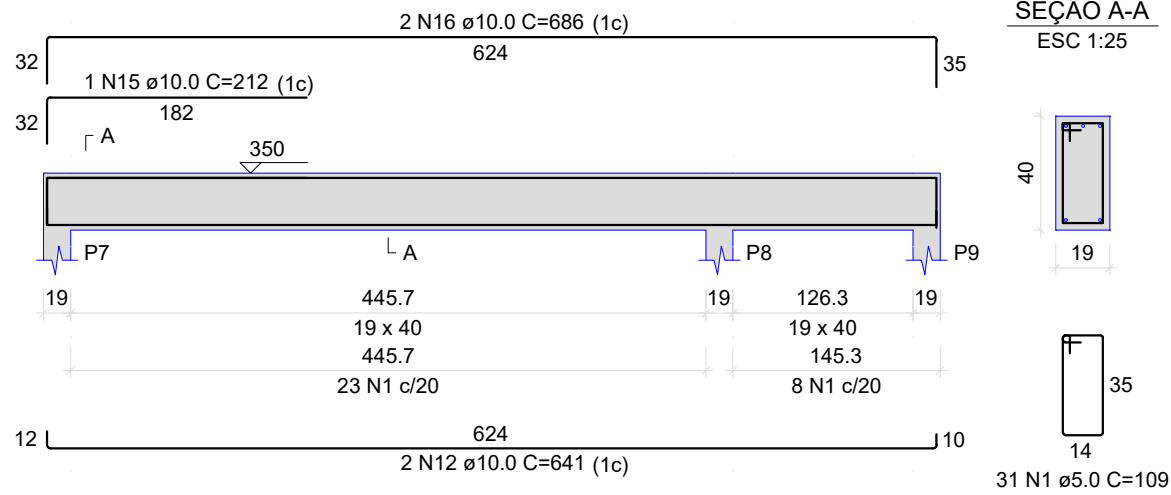
VC202 (19 x 40)

ESC 1:50



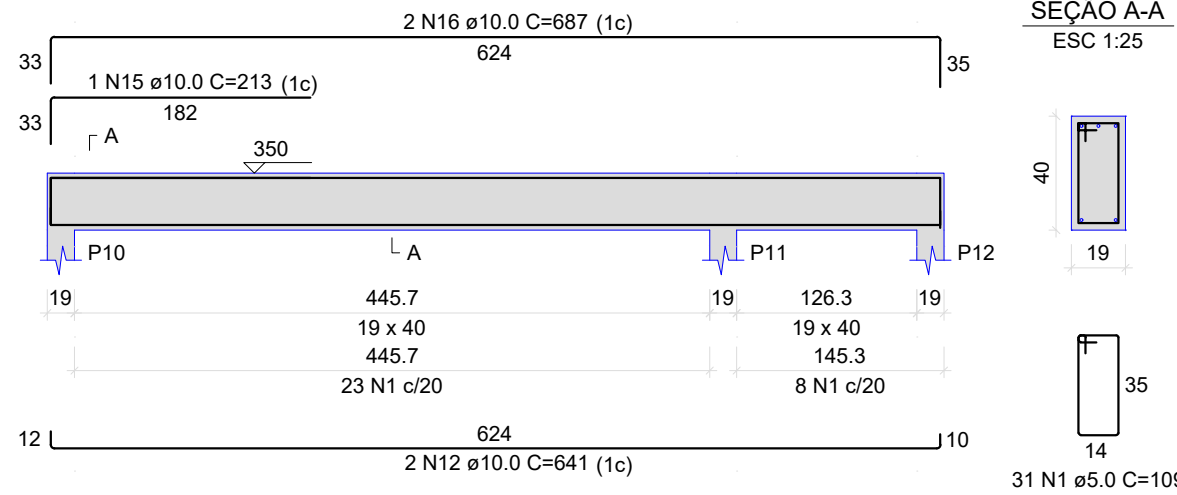
VC203 (19 x 40)

ESC 1:50



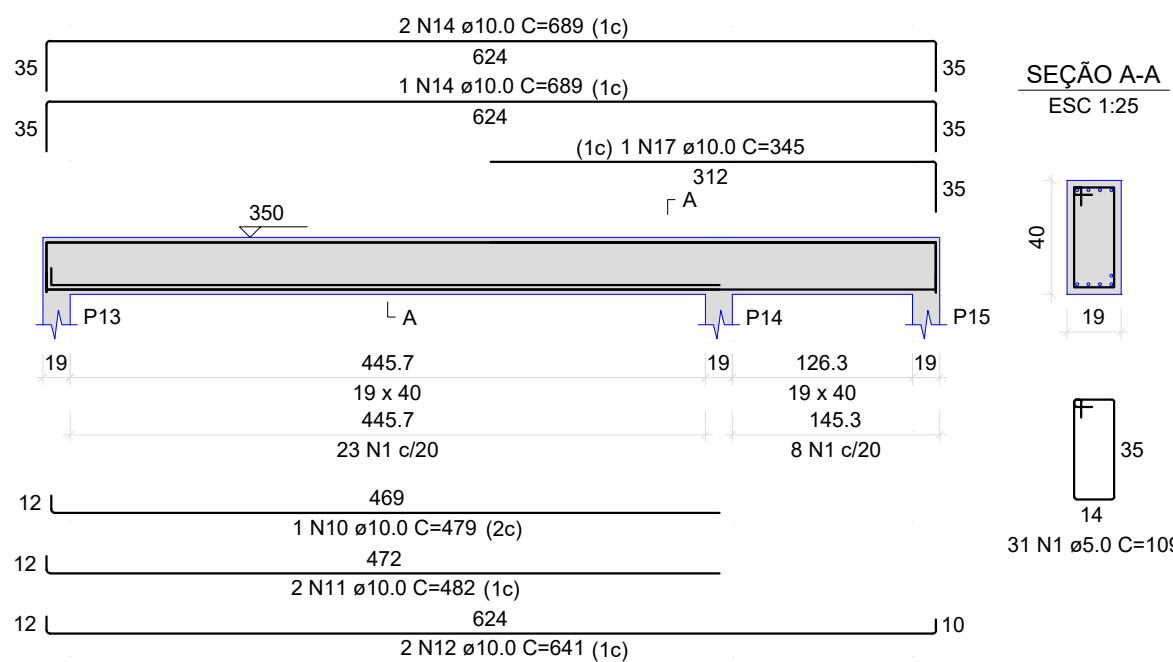
VC204 (19 x 40)

ESC 1:50



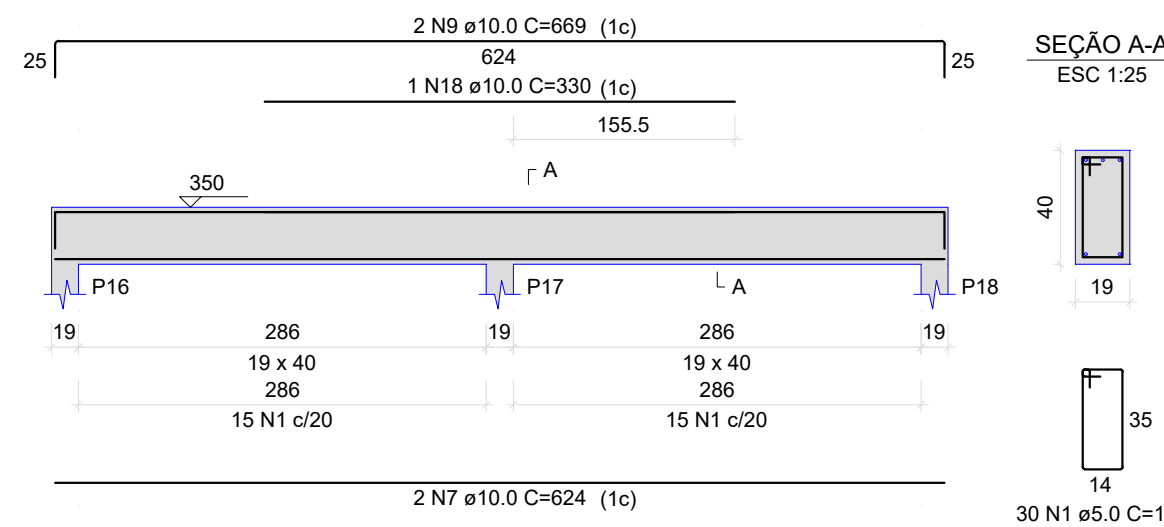
VC205 (19 x 40)

ESC 1:50



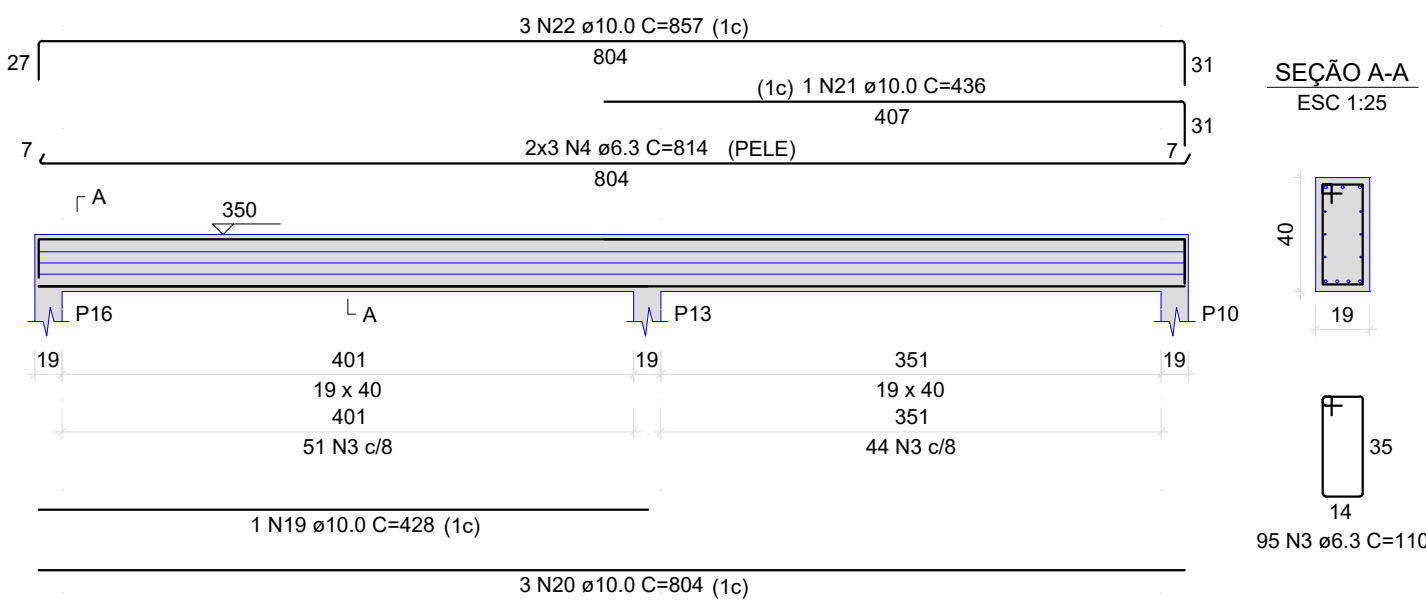
VC206 (19 x 40)

ESC 1:50



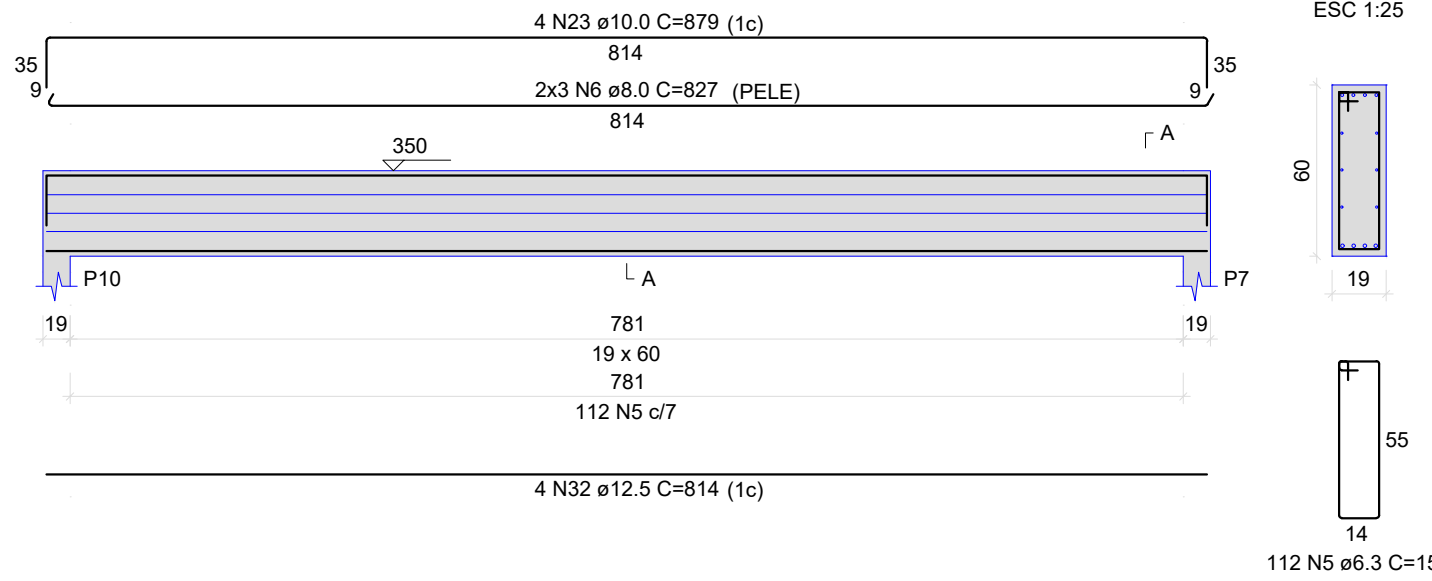
VC207 (19 x 40)

ESC 1:50



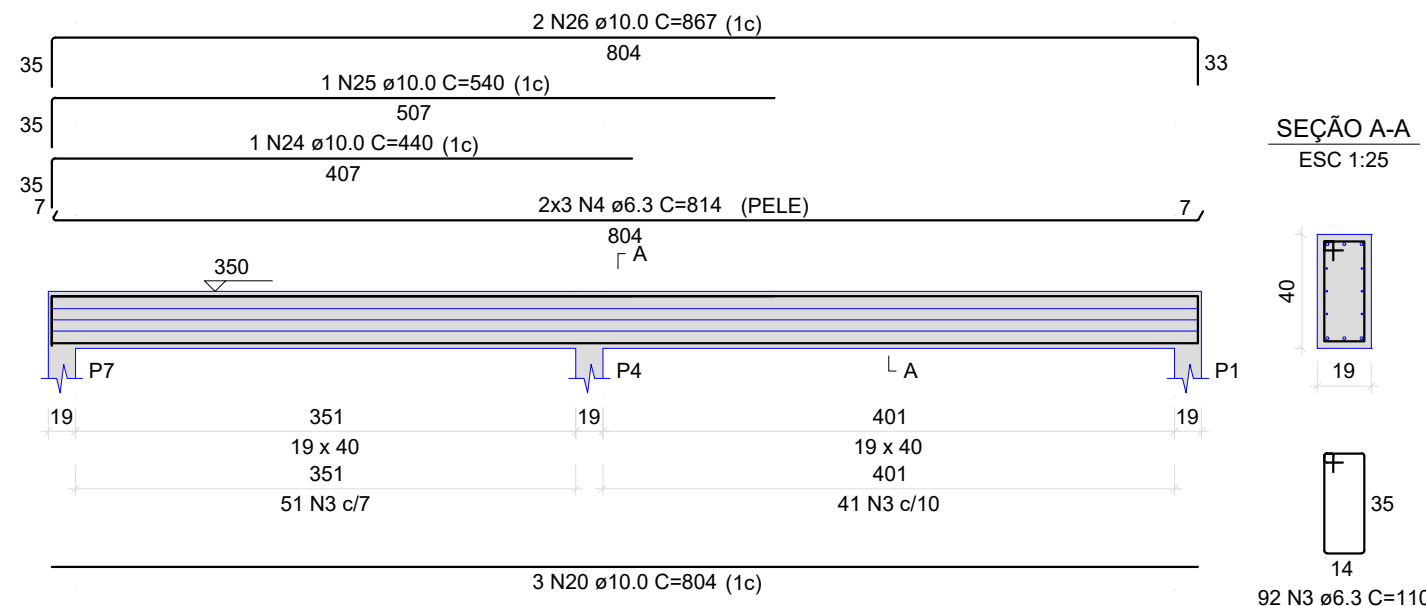
VC208 (19 x 60)

ESC 1:50



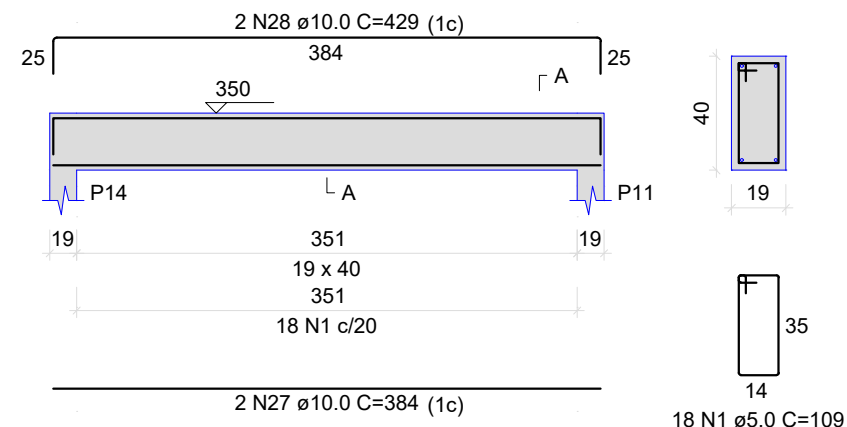
VC209 (19 x 40)

ESC 1:50



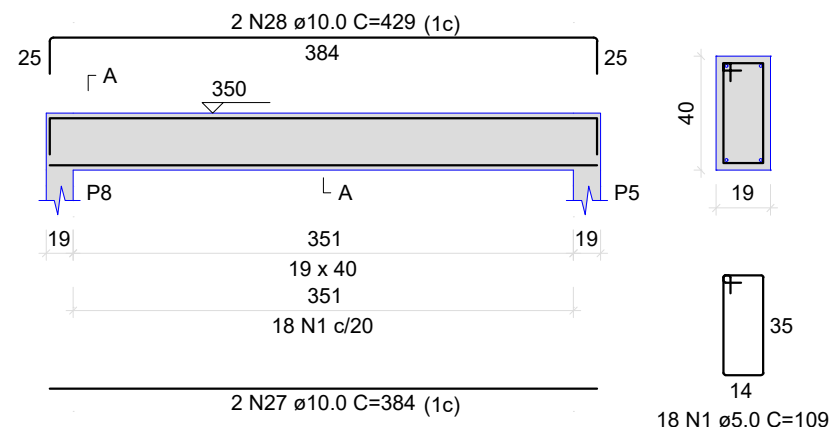
VC210 (19 x 40)

ESC 1:50



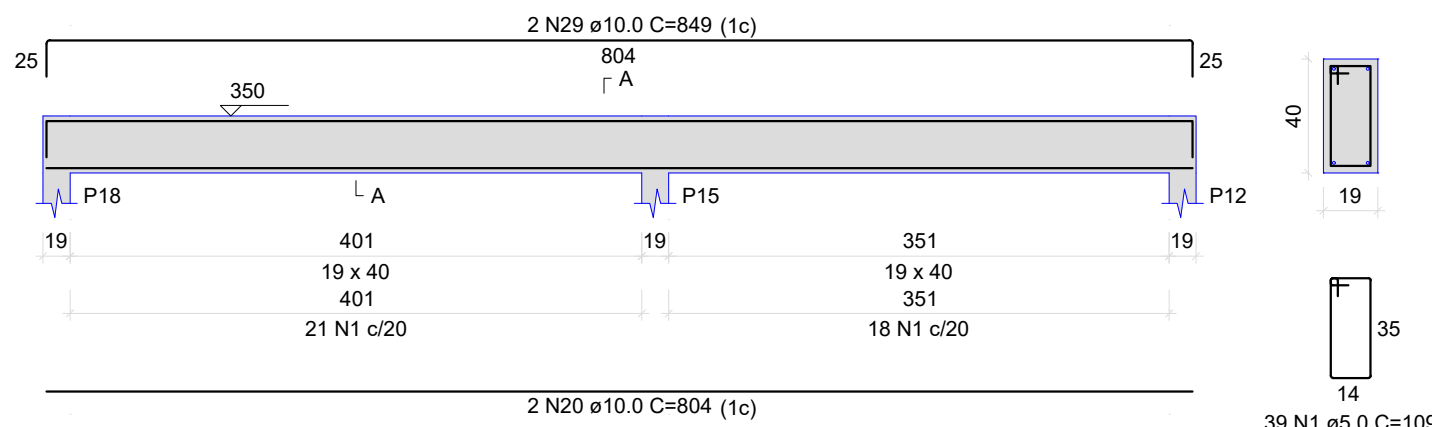
VC211 (19 x 40)

ESC 1:50



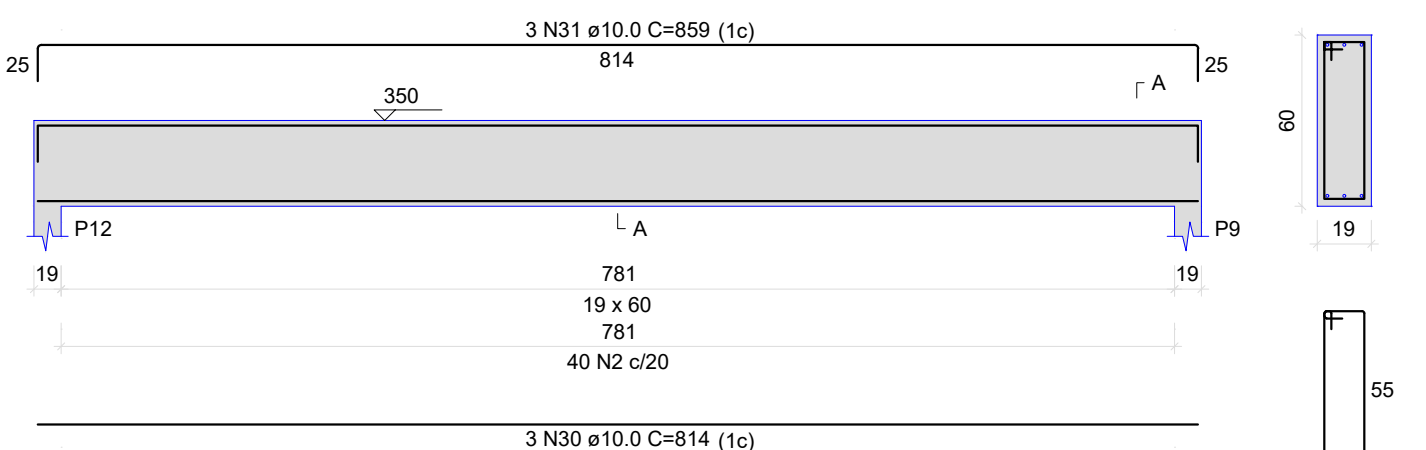
VC212 (19 x 40)

ESC 1:50



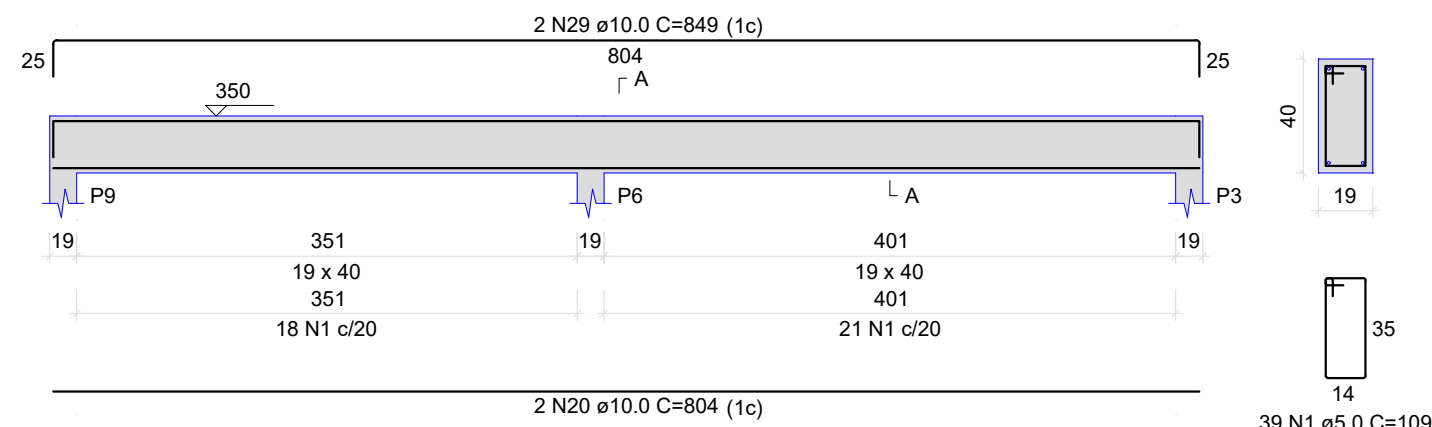
VC213 (19 x 60)

ESC 1:50



VC214 (19 x 40)

ESC 1:50



RELAÇÃO DO AÇO					
VC201	VC202	VC203	VC204	VC205	VC206
VC207	VC208	VC209	VC210	VC211	VC212
VC213	VC214				
AÇO	N	DIAM (mm)	QUANT	C.UNIT (cm)	C.TOTAL (cm)
CA60	1	5.0	298	109	32482
CA50	2	5.0	40	149	5960
	3	6.3	187	110	20570
	4	6.3	12	814	9768
	5	6.3	112	150	16800
	6	8.0	6	827	4962
	7	10.0	4	624	2496
	8	10.0	2	335	335
	9	10.0	4	669	2676
	10	10.0	2	479	958
	11	10.0	4	482	1928
	12	10.0	8	641	5128
	13	10.0	1	340	340
	14	10.0	6	689	4154
	15	10.0	2	212	424
	16	10.0	4	686	2744
	17	10.0	1	345	345
	18	10.0	1	330	330
	19	10.0	1	428	428
	20	10.0	10	804	8040
	21	10.0	1	436	436
	22	10.0	3	857	2571
	23	10.0	4	879	3516
	24	10.0	1	440	440
	25	10.0	1	540	540
	26	10.0	2	867	1734
	27	10.0	4	384	1536
	28	10.0	4	429	1716
	29	10.0	4	849	3396
	30	10.0	3	814	2442
	31	10.0	3	859	2577
	32	12.5	4	814	3256

RESUMO DO AÇO			
AÇO	DIAM (mm)	C.TOTAL (m)	PESO + 10% (kg)
CA50	6.3	471.4	126.9
	8.0	49.6	21.5
	10.0	512.1	347.3
	12.5	32.6	34.5
CA60	5.0	384.4	65.2

PESO TOTAL (kg)

CA50	530.2
CA60	65.2

Volume de concreto (C-25) = 7.21 m³

Área de forma = 72.55 m²

PROJETO ESTRUTURAL

COSNTRUÇÃO

ARMADURAS - VIGAS DE COBERTURA

ENDEREÇO: Av. José Ferezin, n° 950 - Bairro JD. Bela Vista - Arandu/SP

PROP.: PREFEITURA MUNICIPAL DE ARANDU

folha

1/1

Escala Indicadas

Rev:01 / 18-05-2023